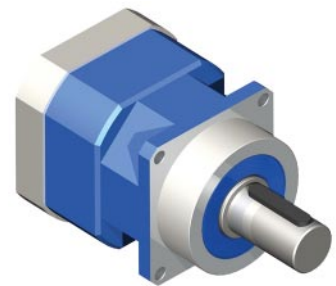


# GBPC-100x-NU Series

FEATURES

- Backlash as low as 3 arc-min
- Gear ratios from 3 to 100
- Available in 1 and 2 stage models
- Long wear life, over 20,000
- Lifetime lubrication
- High durability



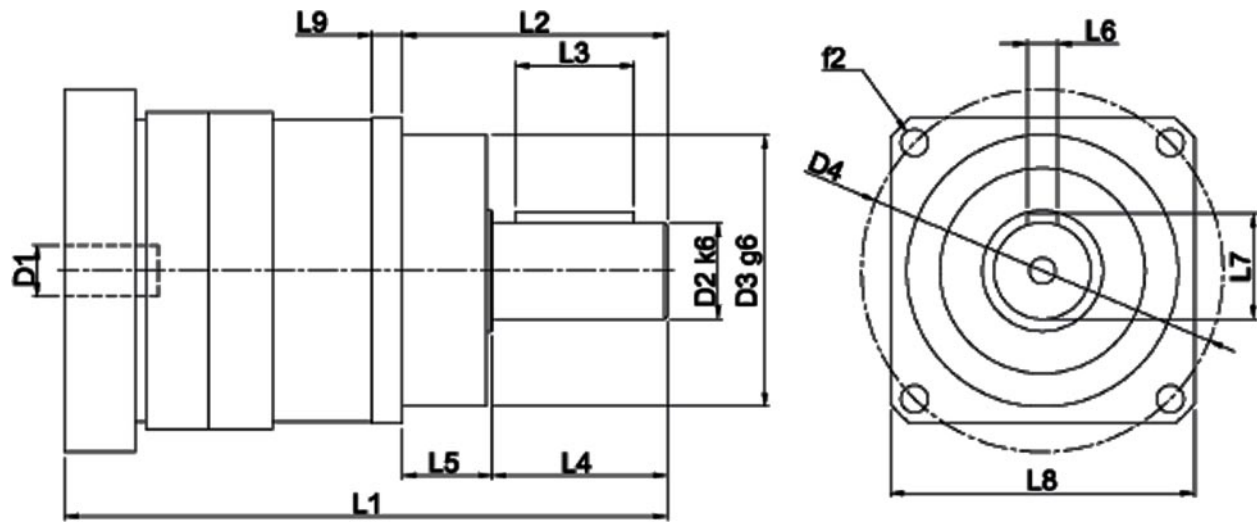
DESCRIPTION

The GBPC-100-NU Series Planetary Gearbox offers you the precision you need at the prices you want! This Planetary Gearbox is designed with very low backlash for motion control, automation, and robotic applications requiring precise position requirements. This Planetary Gearbox will match your servo or stepping motor. Built with the design goal of offering a cost effective product without sacrificing quality, you will find that this Planetary Gearbox offers you an extraordinary value. You will find online prices on this website along with all the information you need to know to select the perfect Planetary Gearbox for your applications.

SPECIFICATIONS

Model #	Gear Ratio (X:1)	Rated Output Torque (oz-in)	Max Output Torque (oz-in)	Rated Input Speed (RPM)	Maximum Input Speed (RPM)	Stages	Backlash Maximum (arcmin)	L1 Length (mm)	L2 Length (mm)	Weight (lbs)
GBPC-1001-NU-003-yyyyy-zzz	3	15584	70800	4000	6000	1	3	226.5	88	15.9
GBPC-1001-NU-004-yyyyy-zzz	4	21248	84960	4000	6000	1	3	226.5	88	15.9
GBPC-1001-NU-005-yyyyy-zzz	5	21248	84960	4000	6000	1	3	226.5	88	15.9
GBPC-1001-NU-007-yyyyy-zzz	7	21248	84960	4000	6000	1	3	226.5	88	15.9
GBPC-1001-NU-010-yyyyy-zzz	10	16288	70800	4000	6000	1	3	226.5	88	15.9
GBPC-1002-NU-012-yyyyy-zzz	12	25488	84960	4000	6000	2	3	251	88	20.9
GBPC-1002-NU-016-yyyyy-zzz	16	25488	84960	4000	6000	2	3	251	88	20.9
GBPC-1002-NU-020-yyyyy-zzz	20	25488	84960	4000	6000	2	3	251	88	20.9
GBPC-1002-NU-025-yyyyy-zzz	25	25488	84960	4000	6000	2	3	251	88	20.9
GBPC-1002-NU-035-yyyyy-zzz	35	25488	84960	4000	6000	2	3	251	88	20.9
GBPC-1002-NU-040-yyyyy-zzz	40	25488	84960	4000	6000	2	3	251	88	20.9
GBPC-1002-NU-050-yyyyy-zzz	50	25488	84960	4000	6000	2	3	251	88	20.9
GBPC-1002-NU-070-yyyyy-zzz	70	25488	84960	4000	6000	2	3	251	88	20.9
GBPC-1002-NU-100-yyyyy-zzz	100	18416	70800	4000	6000	2	3	251	88	20.9

\* yyyyy denotes motor pilot, zzz denotes input shaft diameter, see "Matching the Gearbox to Your Motor" on the next page. L010570



L3	50mm	L4	58mm	L5	30mm
L6	10mm	L7	35mm	L8**	101mm
L9	10mm	D1	24 - 32mm	D2 k6	32mm
D3 g6	90mm	D4	120mm	f2	9mm

\*\* depending on motor, value may vary.

Radial Load:	1418 lbs - Force	Axial Load:	1260 lbs - Force
Operating Temperature:	-4° - 194° F	Noise Level:	under 67 dB
Efficiency:	96%	IP Rating:	IP65

### Matching the Gearbox to Your Motor

There are a few details that you need to consider before purchasing a gearbox. The gearbox must be manufactured to match the motor's bolt hole circle, pilot diameter, shaft diameter, and shaft length. This is handled by a code in the last two sections of the part number. For instance, in the part number GBPC-1001-NU-003-AAyy1-zzz, the "AAyy1" is for an Anaheim Automation NEMA yy Motor pilot and the shaft length. The "zzz" is for the shaft diameter of 0.zzz". For non standard Anaheim Automation or custom motors contact factory for complete part number.

Parameter	Range	Typical
Input Shaft Diameter	Stage 1: 1 mm to 32 mm Stage 2: 1 mm to 24 mm	24 mm shaft diameter
Input Shaft Length	10 mm to 88 mm	"AAyy1" - zzz"
Pilot	Stage 1: 32 mm to 300 mm Stage 2: 24 mm to 300 mm	"AAyy1" - zzz"
Bolt Hole Circle	1 mm to 350mm	"AAyy1" - zzz"